



東元全密型 **MAX-PE IE3** 優級效率馬達

MODEL : AEHH8P

PREMIUM EFFICIENCY 3-PHASE INDUCTION MOTORS
LOW VOLTAGE SQUIRREL CAGE
FRAME SIZE : 143T~449T



DWG NO.

31057D66101

REV. 05

		SPECIFICATION TABLE	MODEL AEHH8P
		3-PHASE INDUCTION MOTORS LOW VOLTAGE SQUIRREL CAGE	
ITEM		STANDARD SPECIFICATION	
R A T I N G	Kind of Motors	Squirrel Cage Induction Motors (SCIM)	
	Design Standards	NEMA MG-1, MG-13.	
	Voltages	230/460V (208V De-Rating Operation)	
	Frequency	60Hz	
	Output Range	1HP~200HP	
	R.P.M. (Syn.)	3600~1200 R.P.M.(2~6 Poles)	
	Time Duty	Continuous, S.F. 1.15 (S1, MCR)	
	Frame Size (EX)	143T~449T	
	Protection Enclosure	Totally Enclosed (IP44).	
	Cooling Method	Self External Fan, Surface Cooling (IC 411).	
Mounting	Horizontal Foot Mounting F-1 (IM 1001), F-2 Interchangeable.		
A P P L I C A T I O N	Power Condition	Voltage : $\pm 10\%$, Frequency : $\pm 5\%$, AND $\pm 10\%$ of Combined Voltage and Frequency, But Frequency Variation does not Exceed $\pm 5\%$.	
	Environment Conditions	Place : Shadow, Non-Hazardous. Ambient Temperature : $-20^{\circ}\text{C} \sim 40^{\circ}\text{C}$ Relative Humidity : Less Than 90%RH (Non-Condensation). Altitude : Less Than 3,300ft	
	Drive Method	Belt Service, However, 2 Pole 25HP and up Coupling Service is The Way.	
	Direction of Rotation	Bi-Directional	
	Method of Starting	Full Voltage Direct On Line , For 7.5HP & Up - Δ Be Available.	
P E R F O R M A N C E	Test Procedure	IEEE-112 Method B and Full Voltage Measuring Starting Performance	
	Temperature Rise	400T and below not to Exceed 90°C for S.F.1.15 or 80°C for S.F.1.0 440T not to Exceed 115°C for S.F.1.15 or 105°C for S.F.1.0 Measuring by Resistance Method.	
	Over Speed	125% Syn. R.P.M. for 2 Minutes. (2,4, Poles); 150% Syn. R.P.M. for 2 Minutes. (the others);	
	Over Torque	160% Rated Torque for 15 Sec.	
O P T I O N	VFD Capability @ 1.0 S.F. (CSA VFD Certification)	Speed Range VT : 20 : 1, CT : 10 : 1 , F#143~405T Speed Range VT : 20 : 1, CT : 5 : 1 or 3 : 1 or 2 : 1 , F#444~449T(X)& TS(X)	
	Environment Conditions	Class I, Div.2, Group B, C & D, Temp. Code T3 min per CSA Certificate.	
		Class II, Div. 2, Group F & G per CSA Certificate.	

PERFORMANCE DATA

3-PHASE SQUIRREL CAGE
HIGH EFFICIENCY INDUCTION MOTORS

MODEL

AEHH8P



TEFC, NEMA T-FRAME, DESIGN - B,
CLASS F, 40°C AMBIENT, CONTINUOUS DUTY,
S.F. 1.15 460V 60Hz

TYPICAL PERFORMANCE

(460 V)

HP	FULL LOAD RPM	FRAME SIZE	EFFICIENCY(%)				POWER FACTOR(%)			CURRENT			TORQUE				ROTOR WK ² lb-ft ²	APPROX. WEIGHT LBS	NEMA CODE LETTER
			FULL LOAD		3/4 LOAD	1/2 LOAD	FULL LOAD	3/4 LOAD	1/2 LOAD	FULL LOAD	208V USABLE ON-A	LOCKED ROTOR (A)	FULL LOAD lb-ft	LOCKED ROTOR %FLT	PULL UP %FLT	BREAK DOWN %FLT			
			NOM.	MIN.	NOM.	NOM.	NOM.	NOM.	NOM.	(A)	(A)	(A)	(A)	(A)	(A)				
1	3465	143T	82.5	80.0	81.5	78.5	85.0	79.5	68.5	1.34	2.95	15	1.515	350	365	400	0.046	41	N
	1745	143T	85.5	82.5	84.0	81.5	73.0	64.5	51.5	1.50	3.32	15	3.009	310	280	410	0.086	43	N
	1150	145T	82.5	80.0	82.5	80.0	65.5	57.0	44.5	1.73	3.83	15	4.566	250	220	300	0.122	49	N
1.5	3465	143T	84.0	81.5	84.0	81.5	83.5	77.0	65.0	2.00	4.43	20	2.273	340	280	350	0.052	43	M
	1730	145T	86.5	84.0	86.5	85.5	78.0	70.0	57.0	2.08	4.60	20	4.552	300	260	360	0.093	47	M
	1170	182T	87.5	85.5	85.5	82.5	63.5	55.0	42.5	2.53	5.59	20	6.731	210	190	350	0.313	77	M
2	3465	145T	86.5	84.0	86.5	85.5	86.0	80.5	70.0	2.52	5.57	25	3.031	350	315	390	0.064	44	L
	1740	145T	86.5	84.0	86.5	84.0	78.0	70.0	57.0	2.78	6.14	25	6.035	270	220	330	0.108	49	L
	1170	184T	88.5	86.5	88.5	86.5	70.5	63.0	50.5	3.00	6.64	25	8.975	180	150	270	0.423	97	L
3	3490	182T	88.5	86.5	90.2	89.5	90.0	87.0	79.5	3.53	7.80	32	4.513	280	250	380	0.190	77	K
	1755	182T	89.5	87.5	89.5	87.5	81.5	77.0	66.5	3.85	8.52	32	8.975	225	175	300	0.367	85	K
	1175	213T	89.5	87.5	89.5	87.5	78.0	70.5	58.5	4.02	8.90	32	13.41	210	180	340	0.918	143	K
5	3480	184T	88.5	86.5	89.5	89.5	92.5	91.0	85.5	5.72	12.6	46	7.544	290	230	320	0.272	88	J
	1745	184T	89.5	87.5	88.5	88.5	85.5	81.5	71.5	6.12	13.5	46	15.04	185	140	285	0.422	90	J
	1170	215T	91.0	89.5	91.0	89.5	82.5	77.0	65.5	6.24	13.8	46	22.44	190	160	300	1.224	172	J
7.5	3510	213T	91.0	89.5	91.0	90.2	87.0	85.0	78.0	8.87	19.6	64	11.22	200	175	275	0.448	141	H
	1760	213T	91.7	90.2	91.0	89.5	83.0	79.0	69.5	9.23	20.4	64	22.37	230	155	270	0.806	151	H
	1170	254T	91.0	89.5	91.0	89.5	80.5	75.0	64.0	9.59	21.2	64	33.66	240	215	270	2.158	251	H
10	3510	215T	91.0	89.5	91.7	91.0	89.5	88.5	82.5	11.5	25.4	81	14.96	220	180	260	0.573	154	H
	1765	215T	91.7	90.2	91.0	91.0	83.0	79.0	69.5	12.3	27.2	81	29.75	240	145	260	0.986	170	H
	1170	256T	91.0	89.5	91.7	90.2	80.5	75.0	64.0	12.8	28.3	81	44.88	225	185	250	2.872	298	H
15	3525	254T	92.4	91.0	92.4	91.7	91.5	90.5	86.0	16.6	36.7	116	22.34	210	180	270	1.088	264	G
	1765	254T	92.4	91.0	93.0	92.4	88.0	85.0	77.0	17.3	38.2	116	44.62	245	180	270	2.179	291	G
	1175	284T	92.4	91.0	93.0	93.0	83.5	79.5	70.5	18.2	40.3	116	67.03	215	180	230	6.823	415	G
20	3520	256T	92.4	91.0	93.0	93.6	92.5	91.5	88.0	21.9	48.5	145	29.83	210	180	260	1.407	313	G
	1760	256T	93.0	91.7	92.4	92.4	87.5	84.5	78.5	23.0	50.9	145	59.66	200	145	240	2.871	347	G
	1170	286T	91.7	90.2	92.4	92.4	84.0	81.0	73.0	24.3	53.8	145	89.75	210	160	225	8.340	470	G
25	3545	284TS	92.4	91.0	93.0	92.4	91.0	90.5	86.5	27.8	61.6	183	37.03	175	135	250	2.507	400	G
	1765	284T	93.6	92.4	93.6	93.6	86.0	83.0	77.0	29.1	64.3	183	74.37	205	165	240	4.586	429	G
	1170	324T(X)	93.0	91.7	93.6	93.6	83.0	80.0	71.5	30.3	67.1	183	112.2	240	200	250	10.59	525	G
30	3545	286TS	93.0	91.7	93.6	93.0	91.0	90.5	87.5	33.2	73.4	218	44.43	175	140	240	2.831	442	G
	1770	286T	93.6	92.4	93.6	93.6	87.5	85.5	79.5	34.3	75.8	218	88.99	200	160	235	5.274	470	G
	1175	326T(X)	93.0	91.7	93.6	93.6	81.5	78.5	71.0	37.1	82.0	218	134.1	240	200	250	11.72	545	G
40	3535	324TS(X)	92.4	91.0	93.0	92.7	92.0	91.0	88.0	44.1	97.4	290	59.41	220	180	240	2.790	542	G
	1770	324T(X)	94.1	93.0	94.5	94.5	86.0	84.5	78.5	46.3	102	290	118.7	205	170	220	5.947	505	G
	1180	364T	94.1	93.0	94.5	94.1	86.5	84.5	78.0	46.0	102	290	178.0	200	150	220	17.94	837	G
50	3540	326TS(X)	93.0	91.7	93.7	93.0	92.0	91.0	89.0	54.7	121	363	74.15	230	200	250	3.238	614	G
	1770	326T(X)	94.5	93.6	94.5	94.0	85.0	83.0	77.0	58.3	129	363	148.3	210	180	250	6.404	567	G
	1180	365T	94.1	93.0	94.5	93.6	86.0	83.0	75.5	57.8	128	363	222.5	225	170	240	21.39	918	G
60	3550	364TS	94.1	93.0	94.5	94.1	93.0	92.0	88.5	64.2	142	435	88.74	145	130	240	7.379	791	G
	1775	364T	95.0	94.1	95.0	94.5	86.5	83.0	75.5	68.4	151	435	177.5	200	155	240	12.23	825	G
	1180	404T	94.5	93.6	94.5	94.1	87.0	86.5	80.5	68.3	151	435	267.0	200	185	245	33.54	1175	G
75	3555	365TS	94.5	93.6	95.0	95.0	93.0	92.5	89.0	79.9	177	543	110.8	145	130	250	9.056	881	G
	1775	365T	95.4	94.5	95.4	95.0	86.5	83.5	75.5	85.1	188	543	221.9	200	165	250	14.67	927	G
	1180	405T	94.5	93.6	94.5	94.5	86.5	84.5	79.0	85.9	190	543	333.7	200	175	225	37.86	1271	G
100	3560	405TS	95.4	94.5	95.8	95.4	92.0	91.5	88.5	107	236	725	147.5	140	125	270	10.77	1164	G
	1775	405T	95.4	94.5	95.4	95.0	87.5	85.5	80.0	112	248	725	295.8	215	140	215	26.64	1238	G
	1181	444T	95.0	94.1	94.5	93.6	82.5	80.0	73.0	119	264	725	444.6	140	110	230	56.00	1510	G
125	3563	444TS	95.0	94.1	94.5	93.6	86.0	83.5	80.0	143	317	910	184.2	110	88	220	14.20	1272	G
	1780	444T	95.4	94.5	95.0	94.1	84.0	82.0	77.0	146	323	910	368.7	130	100	220	39.10	1380	G
	1182	445T	95.0	94.1	94.5	93.6	83.0	80.5	74.0	148	328	910	555.3	140	110	230	68.00	1691	G

PERFORMANCE DATA

3-PHASE SQUIRREL CAGE
HIGH EFFICIENCY INDUCTION MOTORS

MODEL

AEHH8P



C C 0 0 2 A

TEFC, NEMA T-FRAME, DESIGN - B,
CLASS F, 40°C AMBIENT, CONTINUOUS DUTY,
S.F. 1.15 460V 60Hz

TYPICAL PERFORMANCE

(460 V)

HP	FULL LOAD RPM	FRAME SIZE	EFFICIENCY(%)				POWER FACTOR(%)			CURRENT			TORQUE				ROTOR WK ² lb-ft ²	APPROX. WEIGHT LBS	NEMA CODE LETTER
			FULL LOAD		3/4 LOAD	1/2 LOAD	FULL LOAD	3/4 LOAD	1/2 LOAD	FULL LOAD (A)	208V USABLE ON-A	LOCKED ROTOR (A)	FULL LOAD lb-ft	LOCKED ROTOR %FLT	PULL UP %FLT	BREAK DOWN %FLT			
			NOM.	MIN.															
150	3566	445TS	95.0	94.1	94.5	93.6	87.0	84.5	81.0	170	---	1085	220.9	110	88	220	16.00	1481	G
	1783	445T	95.8	95.0	95.4	94.5	84.0	82.0	78.0	175	---	1085	441.7	130	100	220	52.00	1510	G
	1185	447T	95.8	95.0	95.4	94.5	83.5	81.0	74.0	176	---	1085	664.6	135	105	220	100.6	2073	G
200	3572	447TS	95.4	94.5	95.0	94.1	87.0	84.5	81.0	226	---	1450	294.0	104	83	210	30.20	1716	G
	1785	447T	96.2	95.4	95.8	95.0	84.5	82.5	78.5	230	---	1450	588.3	120	95	210	73.50	1923	G
	1186	449T	95.8	95.0	95.4	94.5	84.0	81.0	74.0	233	---	1450	885.4	135	105	210	115.0	2247	G

- NOTE :
1. The above are typical values based on test according to ANSI/IEEE standard 112 method B.
 2. Breakdown & locked rotor torques are shown as average expected values.
 3. Efficiency, power factor, speed and torque are the same for other voltages.
Current values vary inversely with voltage.
 4. Tolerance according to NEMA MG1-12 & IEC 60034-1.
 5. Data subject to change without notice.
 - 6 is suitable for 2 · 4 · 6 pole up to 200HP.

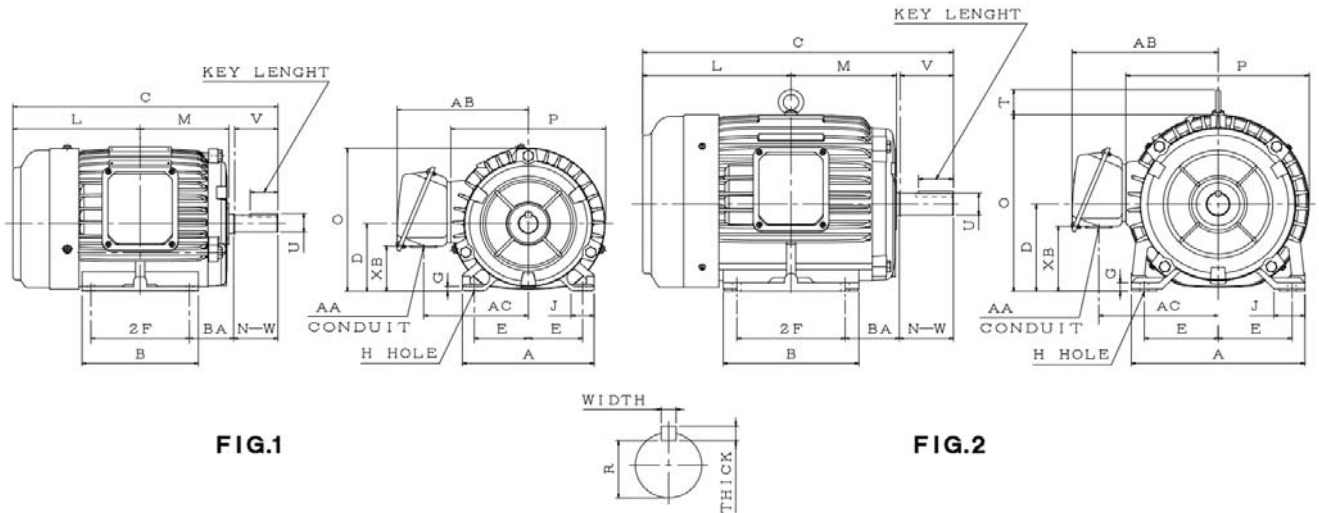
OUTLINE DIMENSIONS SHEET

MODEL

AEHH8P

3-PHASE INDUCTION MOTORS
FRAME SIZE 143T~215T

Totally Enclosed Fan - Cooled Type, Squirrel - Cage Rotor.



Dimension in inches

Output (HP)			FRAME SIZE	FIG. NO.	Mounting				A	B	C	D	G	J	L	M	O	P
2P	4P	6P			E	2F	H	BA										
1	1	—	143T	1	2.75	4.00	0.34	2.25	6.70	5.10	12.47	3.50	0.25	1.18	5.96	4.00	7.40	7.84
1.5	—	—	145T		2.75	5.00	0.34	2.25	6.70	5.90	13.46	3.50	0.25	1.18	6.46	4.50	7.40	7.84
3	3	1.5	182T	2	3.75	4.50	0.41	2.75	8.80	5.90	14.77	4.50	0.44	1.57	7.03	4.85	9.11	9.31
5	5	2	184T		3.75	5.50	0.41	2.75	8.80	6.90	15.79	4.50	0.44	1.57	7.54	5.35	9.11	9.31
7.5	7.5	3	213T		4.25	5.50	0.41	3.50	9.85	6.90	18.09	5.25	0.49	1.65	8.46	6.05	10.53	10.73
10	10	5	215T		4.25	7.00	0.41	3.50	9.85	8.35	19.59	5.25	0.49	1.65	9.21	6.80	10.53	10.73

FRAME SIZE	T	Key			Keyseat R	Shaft Extension			Terminal Housing				Bearings	
		WIDTH	THICK	LENGTH		N-W	U	V	AA	AB	AC	XB	DRIVE END	OPPOSITE DRIVE END
143T	—	0.188	0.188	1.41	0.771	2.25	0.875	2.20	1.10	6.69	5.3	2.36	6205ZZ	6205ZZ
145T	—	0.188	0.188	1.41	0.771	2.25	0.875	2.20	1.10	6.69	5.3	2.36	6205ZZ	6205ZZ
182T	1.30	0.250	0.250	1.78	0.986	2.75	1.125	2.70	1.10	7.44	6.06	3.36	6306ZZ	6206ZZ
184T	1.30	0.250	0.250	1.78	0.986	2.75	1.125	2.70	1.10	7.44	6.06	3.36	6306ZZ	6206ZZ
213T	1.65	0.312	0.312	2.41	1.201	3.38	1.375	3.30	1.38	8.86	7.07	3.32	6308ZZ	6306ZZ
215T	1.65	0.312	0.312	2.41	1.201	3.38	1.375	3.30	1.38	8.86	7.07	3.32	6308ZZ	6306ZZ

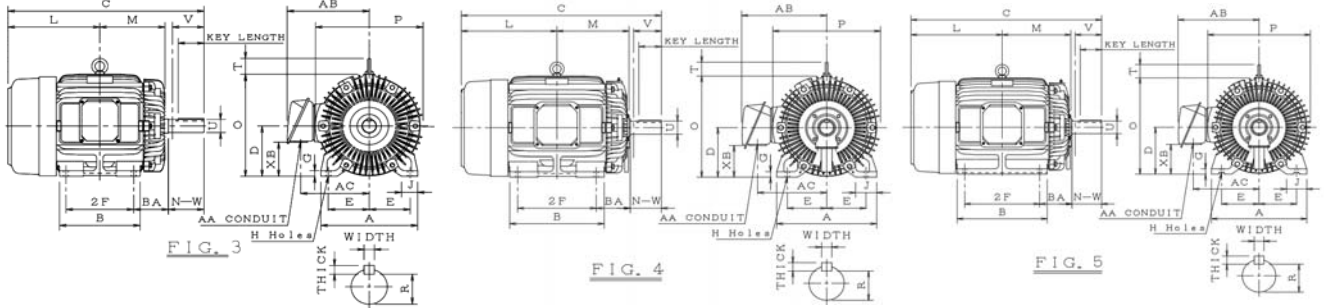
- Note :**
1. Dimension D tolerance : +0.00 inch, -0.03 inch.
 2. Dimension U tolerance : +0.000 inch, -0.0005 inch.
 3. Dimension R tolerance : +0.000 inch, -0.015 inch.
 4. Dimension V is length of straight part of shaft.

OUTLINE DIMENSIONS SHEET

MODEL
AEHH8P

3-PHASE INDUCTION MOTORS
FRAME SIZE. 254T~405TS

Totally Enclosed Fan - Cooled Type, Squirrel - Cage Rotor.



Dimension in inches

Output (HP)			FRAME SIZE	FIG. NO.	Mounting				A	B	C	D	G	J	L	M	O	P
2P	4P	6P			E	2F	H	BA										
15	15	7.5	254T	3	5.00	8.25	0.53	4.25	11.80	9.85	23.60	6.25	0.65	1.95	11.23	7.98	12.80	13.15
20	20	10	256T		5.00	10.00	0.53	4.25	11.80	11.80	25.34	6.25	0.65	1.95	12.09	8.86	12.80	13.15
—	25	15	284T		5.50	9.50	0.53	4.75	14.00	11.70	26.74	7.00	0.70	2.95	12.62	9.11	14.50	15.05
25	—	—	284TS	4	5.50	9.50	0.53	4.75	14.00	11.70	25.37	7.00	0.70	2.95	12.62	9.31	14.50	15.05
—	30	20	286T	3	5.50	11.00	0.53	4.75	14.00	13.20	28.24	7.00	0.70	2.95	13.37	9.86	14.50	15.05
30	—	—	286TS	4	5.50	11.00	0.53	4.75	14.00	13.20	26.87	7.00	0.70	2.95	13.37	10.06	14.50	15.05
—	40	25	324T(X)		6.25	10.50	0.66	5.25	15.75	12.87	29.43	8.00	1.10	3.15	13.68	10.22	15.50	15.91
40	—	—	324TS(X)		6.25	10.50	0.66	5.25	15.75	14.37	29.43	8.00	1.10	3.15	14.43	10.96	15.50	15.91
—	50	30	326T(X)		6.25	12.00	0.66	5.25	15.75	14.37	30.93	8.00	1.10	3.15	14.43	10.96	15.50	15.91
50	—	—	326TS(X)		6.25	12.00	0.66	5.25	15.75	16.34	31.40	8.00	1.10	3.15	15.41	11.95	15.50	15.91
—	60	40	364T	5	7.00	11.25	0.66	5.88	17.70	13.75	32.51	9.00	1.30	3.55	15.13	11.29	17.80	18.05
60	—	—	364TS		7.00	11.25	0.66	5.88	17.70	13.75	30.38	9.00	1.30	3.55	15.13	11.29	17.80	18.05
—	75	50	365T		7.00	12.25	0.66	5.88	17.70	14.75	33.50	9.00	1.30	3.55	15.61	11.79	17.80	18.05
75	—	—	365TS		7.00	12.25	0.66	5.88	17.70	14.75	31.37	9.00	1.30	3.55	15.61	11.79	17.80	18.05
—	—	60	404T		8.00	12.25	0.81	6.62	19.68	15.15	36.50	10.00	1.57	3.93	16.50	12.52	20.00	20.07
—	100	75	405T		8.00	13.75	0.81	6.62	19.68	16.73	37.99	10.00	1.57	3.93	17.24	13.27	20.00	20.07
100	—	—	405TS		8.00	13.75	0.81	6.62	19.68	16.73	34.99	10.00	1.57	3.93	17.24	13.27	20.00	20.07

FRAME SIZE	T	Key			Keyseat R	Shaft Extension			Terminal Housing				Bearings	
		WIDTH	THICK	LENGTH		N-W	U	V	AA	AB	AC	XB	DRIVE END	OPPOSITE DRIVE END
254T	2.00	0.375	0.375	2.910	1.416	4.000	1.625	3.900	1.38	11.02	8.86	4.37	6309ZZ	6307ZZ
256T	2.00	0.375	0.375	2.910	1.416	4.000	1.625	3.900	1.38	11.02	8.86	4.37	6309ZZ	6307ZZ
284T	2.36	0.500	0.500	3.280	1.591	4.620	1.875	4.500	2.05	12.68	10.20	4.59	6311ZZ	6310ZZ
284TS	2.36	0.375	0.375	1.930	1.416	3.250	1.625	3.200	2.05	12.68	10.20	4.59	6211C3	6211C3
286T	2.36	0.500	0.500	3.280	1.591	4.620	1.875	4.500	2.05	12.68	10.20	4.59	6311ZZ	6310ZZ
286TS	2.36	0.375	0.375	1.930	1.416	3.250	1.625	3.200	2.05	12.68	10.20	4.59	6211C3	6211C3
324T(X)	2.36	0.500	0.500	3.910	1.845	5.250	2.125	5.150	2.56	14.45	11.50	5.19	6312	6310
324TS(X)	2.36	0.500	0.500	2.030	1.591	3.750	1.875	3.650	2.56	14.45	11.50	5.19	6312C3	6310C3
326T(X)	2.36	0.500	0.500	3.910	1.845	5.250	2.125	5.150	2.56	14.45	11.50	5.19	6312	6310
326TS(X)	2.36	0.500	0.500	2.030	1.591	3.750	1.875	3.650	2.56	14.45	11.50	5.19	6312C3	6310C3
364T	2.76	0.625	0.625	4.280	2.021	5.880	2.375	5.750	3.62	17.87	13.35	6.18	6313	6213
364TS	2.76	0.500	0.500	2.030	1.591	3.750	1.875	3.650	3.62	17.87	13.35	6.18	6312C3	6212C3
365T	2.76	0.625	0.625	4.280	2.021	5.880	2.375	5.750	3.62	17.87	13.35	6.18	6313	6213
365TS	2.76	0.500	0.500	2.030	1.591	3.750	1.875	3.650	3.62	17.87	13.35	6.18	6312C3	6212C3
404T	3.54	0.750	0.750	5.650	2.450	7.250	2.875	7.150	0	20.14	15.55	3.54	6317	6313
405T	3.54	0.750	0.750	5.650	2.450	7.250	2.875	7.150	0	20.14	15.55	3.54	6317	6313
405TS	3.54	0.500	0.500	2.780	1.845	4.250	2.125	4.150	0	20.14	15.55	3.54	6313C3	6313C3

- Note :**
1. Dimension D tolerance : +0.00 inch, -0.03 inch.
 2. Dimension U tolerance : +0.000 inch, -0.001 inch.
 3. Dimension R tolerance : +0.000 inch, -0.015 inch.
 4. Dimension V is length of straight part of shaft.

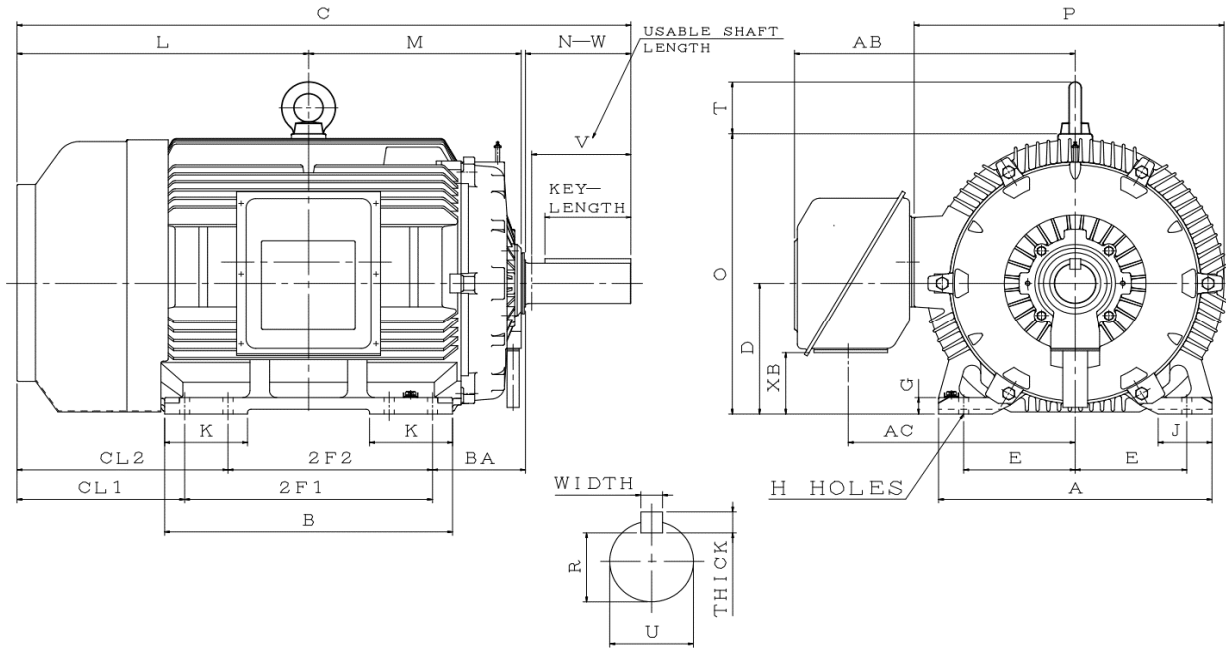
OUTLINE DIMENSIONS SHEET

MODEL

AEHH8P

3-PHASE INDUCTION MOTORS
FRAME SIZE 444T~449TS

Totally Enclosed Fan - Cooled Type, Squirrel - Cage Rotor.



Dimension in inches

Output (HP)			FR# SIZE	Mounting					A	B	C	CL1	CL2	D	G	J	K	L	M
2P	4P	6P		E	2F1	2F2	H	BA											
—	125	100	444T	9.00	14.50	---	0.81	7.50	22.05	17.50	44.02	13.52	---	11.00	1.16	4.33	4.33	20.77	14.27
*125	—	—	444TS	9.00	14.50	---	0.81	7.50	22.05	17.50	40.27	13.52	---	11.00	1.16	4.33	4.33	20.77	14.27
—	150	125	445T	9.00	16.50	14.50	0.81	7.50	22.05	19.49	46.00	13.50	15.50	11.00	1.16	4.33	5.12	21.75	15.26
*150	—	—	445TS	9.00	16.50	14.50	0.81	7.50	22.05	19.49	42.25	13.50	15.50	11.00	1.16	4.33	5.12	21.75	15.26
—	200	150	447T	9.00	20.00	16.50	0.81	7.50	22.05	23.25	49.50	13.50	17.00	11.00	1.40	4.35	6.70	23.50	17.15
*200	—	—	447TS	9.00	20.00	16.50	0.81	7.50	22.05	23.25	45.75	13.50	17.00	11.00	1.40	4.35	6.70	23.50	17.15
—	—	200	449T	9.00	25.00	20.00	0.81	7.50	22.05	27.95	54.52	13.52	18.52	11.00	1.40	4.35	8.27	26.02	19.65

FR# SIZE	O	P	T	Key			Keyseat R	Shaft Extension			Terminal Housing			Bearings	
				WIDTH	THICK	LENGTH		N-W	U	V	AB	AC	XB	DRIVE END	OPPOSITE DRIVE END
444T	22.81	22.70	3.54	0.875	0.875	6.91	2.880	8.50	3.375	8.00	21.86	17.32	5.33	6318	6316
444TS	22.81	22.70	3.54	0.625	0.625	3.03	2.021	4.75	2.375	4.50	21.86	17.32	5.33	6314C3	6314C3
445T	22.81	22.70	3.54	0.875	0.875	6.91	2.880	8.50	3.375	8.00	21.86	17.32	5.33	6318	6316
445TS	22.81	22.70	3.54	0.625	0.625	3.03	2.021	4.75	2.375	4.50	21.86	17.32	5.33	6314C3	6314C3
447T	23.26	25.00	4.35	0.875	0.875	6.91	2.880	8.50	3.375	8.00	22.65	18.30	5.10	6320	6316
447TS	23.26	25.00	4.35	0.625	0.625	3.03	2.021	4.75	2.375	4.50	22.65	18.30	5.10	6314C3	6314C3
449T	23.26	25.00	4.35	0.875	0.875	6.91	2.880	8.50	3.375	8.00	22.65	18.30	5.10	6320	6316

- Note :**
1. Dimension D tolerance : +0.00 inch, -0.06 inch.
 2. Dimension U tolerance : +0.000 inch, -0.0001 inch.
 3. Dimension R tolerance : +0.000 inch, -0.015 inch.
 4. Dimension V is length of straight part of shaft.
 5. *For Direct Flexible Coupling.