



高壓全密氣對氣立式鼠籠型泵浦用馬達

MODEL : A EVE

STANDARD 3-PHASE INDUCTION MOTORS
HIGH VOLTAGE (4201~7000V/60Hz) SQUIRREL CAGE
FRAME NO. (ERV) 800C ~ 1400C



DWG NO.

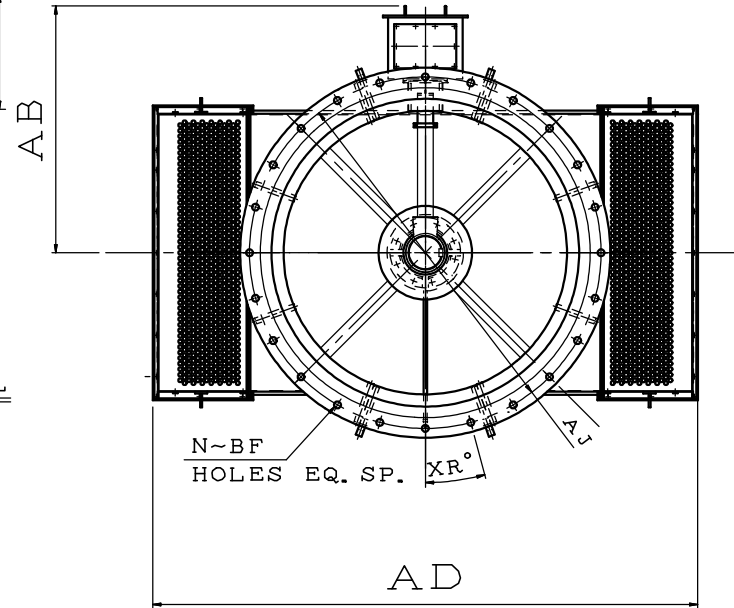
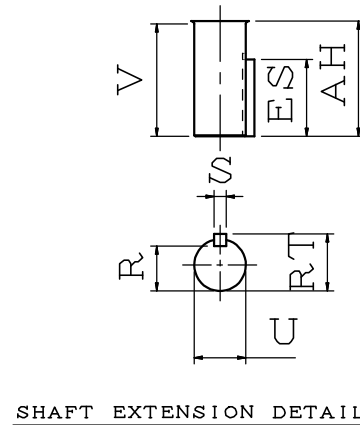
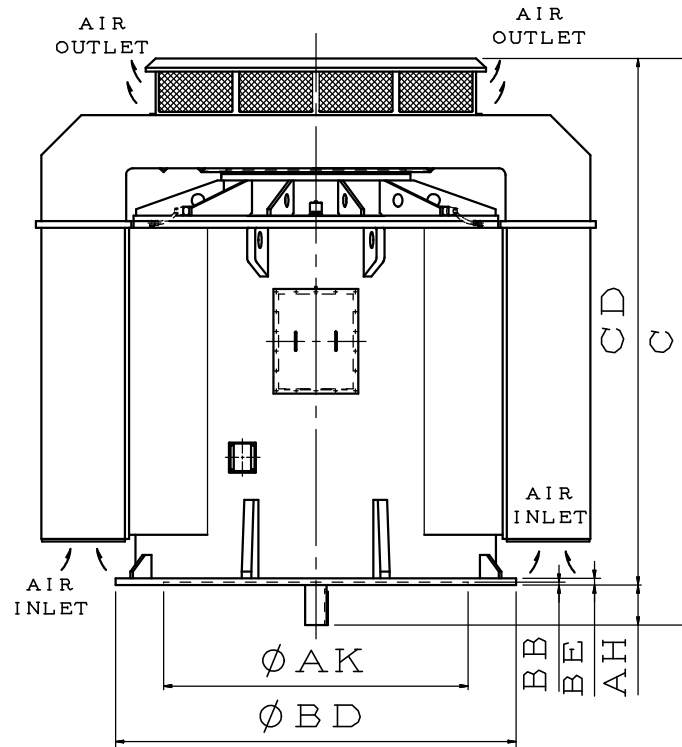
3A057M227E

REV. 00

		SPECIFICATION TABLE	MODEL
		STANDARD 3-PHASE INDUCTION MOTORS HIGH VOLTAGE SQUIRREL CAGE	A EVE 6600V 60Hz
ITEM		STANDARD SPECIFICATION	
R A T I N G	KIND OF MOTOR	SQUIRREL-CAGE INDUCTION MOTOR (SCIM)	
	DESIGN STANDARD	IEC , NEMA	
	VOLTAGE	6600V	
	FREQUENCY	60Hz	
	FRAME NO. (ERV)	800C~1400C	
	OUTPUT RANGE	2240 ~ 5200kW (3000 ~ 7000HP) 60Hz	
	R.P.M. (SYN.)	330 ~ 720R.P.M. (10 ~ 22 POLE) 60Hz	
	TIME DUTY	CONTINUOUS, S.F. 1.0 (S1, MCR) or S.F. 1.15 AT SINUSOIDAL POWER	
	PROTECTION ENCLOSURE	TOTALLY ENCLOSED (IP 54)	
	COOLING METHOD	EXTERNAL AND INTERNAL FANS, WITH AIR TO AIR HEAT EXCHANGER WHICH IS AN INDEPENDENT UNIT MOUNTED DIRECTLY ON THE MOTOR (IC 611)	
	MOUNTING	FLANGE MOUNTING (IM 4011)	
A P P L I C A T I O N	POWER CONDITIONS	VOLTAGE $\pm 10\%$, FREQUENCY $\pm 5\%$ AND 10% MAX. OF COMBINED VOLTAGE AND FREQUENCY WITH FREQUENCY NOT TO EXCEED 5%	
	ENVIRONMENT CONDITIONS	PLACE : SHADOW, NON-HAZARDOUS AMBIENT TEMPERATURE : $-20 \sim 40^{\circ}\text{C}$ (STANDARD); $-20 \sim +50$ (AVAILABLE WHEN REQUEST, FRAME SIZE MAY BE CHANGED) RELATIVE HUMIDITY : LESS THAN $95\%RH$ (NON-CONDENSATION) ALTITUDE : LESS THAN 1,000 METERS	
	OPERATING CONDITIONS	DIRECT COUPLING, SUITABLE FOR FLUID DUTY ONLY	
	ALLOWABLE LOAD WK2	AS DWG NO. 3A057M230E 85% SQUARE LOAD CURVE	
	DRIVE METHOD	DIRECT CONNECTION WITH FLEXIBLE COUPLING. THE ROTOR IS BALANCED WITH A HALF KEY IF POSSIBLE WHICH MUST BE NOTED WHEN SELECTING AND BALANCING THE COUPLING.	
	DIRECTION OF ROTATION	BI-DIRECTIONAL FOR 10P~22P CCW WHEN VIEWED FROM TOP	
	METHOD OF STARTING	FULL VOLTAGE DIRECT ON LINE	
P E R F O R M A N C E	TEST PROCEDURE	IEC 60034, IEEE 112	
	TYPICAL PERFORMANCE	AS DWG NO. 3A057M230E, VALUES IN TABLE ARE NOMINAL	
	TEMPERATURE RISE	S.F. 1.0 80°C BY RESISTANCE METHOD AT SINUSOIDAL POWER S.F. 1.15 105°C BY RESISTANCE METHOD AT SINUSOIDAL POWER S.F. 1.0 105°C BY RESISTANCE METHOD AT INVERTER DUTY	
	NOISE	SOUND PRESSURE LEVEL MEASURED AT 1 METER DISTANCE & NO -LOAD CONDITION PER IEEE 85 METHOD (TOLERANCE ± 3 dBA) BELOW 88dBA FOR STANDARD MACHINES.	
	OVER SPEED	TWO MIN., 125% MAX. RATED SPEED BELOW 1500RPM	
	OVER TORQUE	160% RATED TORQUE FOR 15 SEC.	

PERFORMANCE DATA															MODEL					
3-PHASE SQUIRREL CAGE INDUCTION MOTORS HIGH VOLTAGE SQUIRREL CAGE															AEVE 6600V 60Hz					
TEAAC, BS, DESIGN-B, CLASS F INS, CLASS B TEMP, 40 °C AMBIENT, S.F. 1.0 4201~7000V (6600V) 3-PHASE 60HZ TYPICAL PERFORMANCE (6600V)																				
OUTPUT	FULL	FRAME	EFFICIENCY (%)			POWER FACTOR			CURRENT		TORQUE			ROTOR	DOWN	APPROX.	APPROX.	REED		
			LOAD	SIZE	FULL	3/4	1/2	FULL	3/4	1/2	FULL	LOCKED	FULL						LOCKED	BREAK-
kW (HP)	RPM	(ERV)	NOM.	MIN.	NOM.	NOM.	%	%	%	A	A	lb-ft	%FLT	%FLT	lb-ft ²	LBS	LBS	LBS	Hz	
			LOAD	LOAD	LOAD	LOAD	LOAD	LOAD	LOAD	LOAD	LOAD	LOAD	LOAD	LOAD	LOAD	LOAD	LOAD	LOAD	LOAD	LOAD
2240	3000	510	800	95.1	94.6	94.4	93.8	75.8	69.7	58.0	272	1554	30995	85	220	16692	45800	13500	38800	19
		394	900	94.5	94.0	93.8	93.2	75.6	70.7	59.7	274	1173	40120	67	180	30311	51300	16800	49300	21
		323	1000	94.5	94.0	93.8	93.2	71.5	64.2	51.1	290	1479	48939	96	210	58950	56700	16900	52100	21
2650	3500	597	800	95.2	94.7	94.5	93.9	77.7	72.5	61.7	313	1876	31324	84	200	16048	45900	13400	39000	19
		446	900	95.2	94.7	94.5	93.9	74.6	68.6	56.9	326	1739	41930	82	200	29176	52200	15800	46800	21
		356	1000	94.9	94.4	94.2	93.6	73.1	66.4	53.8	334	1640	52530	81	210	52307	58500	15800	50200	21
3000	4000	510	900	95.2	94.7	94.5	93.9	76.8	71.5	60.6	359	1816	41511	70	200	25564	52200	14800	46200	21
		324	1120	94.8	94.3	94.1	93.5	72.7	65.6	52.8	381	1930	65341	84	210	81146	66600	25200	70900	20
3360	4500	716	800	95.4	95.0	94.8	94.2	81.3	78.3	70.5	379	2080	33116	68	190	16562	47200	13600	40900	19
		396	1000	95.2	94.7	94.5	93.9	76.0	70.5	59.0	406	2038	59876	78	200	57785	63400	16900	53400	21
3750	5000	596	900	95.5	95.1	94.9	94.3	84.8	82.5	76.3	405	2312	44401	74	180	25653	54000	15100	46400	21
		445	1000	95.2	94.7	94.5	93.9	76.6	70.9	59.5	450	2279	59468	79	210	43612	63000	21400	60900	21
		355	1120	95.1	94.6	94.4	93.8	74.8	68.7	56.7	461	2158	74544	68	210	78837	71900	20500	68100	20
4100	5500	510	1000	95.1	94.6	94.4	93.8	79.8	74.6	65.1	473	2503	56732	85	190	41832	61700	20900	59900	21
4500	6000	396	1120	95.4	94.9	94.7	94.1	76.1	70.6	59.3	494	2705	80191	69	200	77965	75400	24900	72900	20
4850	6500	716	900	95.6	95.2	95.0	94.4	84.5	81.7	74.6	525	3194	47801	78	200	23872	56300	14400	49000	21
		446	1120	95.3	94.8	94.6	94.0	78.8	73.6	62.6	565	3300	76739	87	220	72588	73700	23400	69700	20
		324	1250	95.0	94.5	94.3	93.7	76.0	71.3	60.8	588	2570	105635	64	170	140066	90600	32800	90100	20
5200	7000	716	1000	95.3	94.8	94.6	94.0	85.9	83.4	77.0	556	3413	51251	71	200	29941	58500	17500	54000	21
		595	1000	95.4	95.0	94.8	94.2	84.9	81.9	74.5	562	3172	61673	72	200	33463	64800	18500	56900	22
		511	1120	95.7	95.3	95.1	94.5	82.4	78.4	69.0	577	3427	71811	78	210	58493	71000	20200	63100	20
		446	1250	95.0	94.9	94.7	94.1	83.6	80.0	71.5	573	3392	82277	69	220	80021	77200	25700	77000	20
		397	1250	95.3	94.9	94.7	94.1	79.8	75.1	64.9	598	3319	92432	68	220	101454	83300	29800	83000	20
		357	1250	95.5	94.9	94.7	94.1	75.6	70.7	57.7	630	3457	102789	69	220	119348	89300	29100	85200	20
		325	1400	95.1	94.7	94.5	93.9	77.3	71.0	58.8	619	3747	112910	76	240	198310	100000	33900	95300	19

VERTICAL STANDARD SOLID SHAFT, TEAAC TYPE, SQUIRREL CAGE ROTOR.



DIMENSIONS IN mm(INCH)

FRAME NO.	NO. OF POLES	MOUNTING							AB	AD	CD	C	SHAFT EXTENSION				KEY SIZE			BEARING		FRAME NO.
		AK	AJ	BD	BB	BE	N~BF	XR					U	AH	V	R	ES	S	RT	UPPER	LOWER	
800C	10P&UP	1800 (70.9)	1900 (74.8)	2000 (78.7)	10 (0.39)	50 (1.97)	12-35 (12-1.38)	15°	1610 (63.4)	3090 (121.6)	3295 (129.7)	3645 (143.5)	200 (7.87)	350 (13.78)	337 (13.27)	185 (7.28)	280 (11.0)	45 (1.77)	210 (8.27)	29438	6044C3	800C
900C	10P&UP	2000 (78.7)	2120 (83.4)	2240 (88.2)	10 (0.39)	50 (1.97)	12-35 (12-1.38)	15°	1700 (66.9)	3270 (128.7)	3425 (134.8)	3835 (151.0)	240 (9.449)	410 (16.14)	397 (15.63)	220 (8.66)	360 (14.2)	56 (2.21)	252 (9.92)	29444	6052C3	900C
1000C	10P&UP	2000 (78.7)	2120 (83.4)	2240 (88.2)	10 (0.39)	50 (1.97)	12-35 (12-1.38)	15°	1775 (69.9)	3420 (134.6)	3685 (145.0)	4095 (161.2)	260 (10.24)	410 (16.14)	397 (15.63)	240 (9.45)	360 (14.2)	56 (2.21)	272 (10.7)	29452	6052C3	1000C
1120C	10P&UP	2240 (88.2)	2360 (92.9)	2500 (98.4)	10 (0.39)	50 (1.97)	12-48 (12-1.89)	15°	1835 (72.2)	3780 (148.8)	3900 (153.5)	4250 (167.3)	220 (8.66)	350 (13.78)	337 (13.27)	203 (7.99)	280 (11.0)	50 (1.97)	231 (9.09)	29452	6048C3	1120C
1250C	10P&UP	2500 (98.4)	2650 (104.3)	2800 (110.2)	10 (0.39)	50 (1.97)	12-56 (12-2.20)	15°	2000 (78.7)	4110 (161.8)	3995 (157.3)	4405 (173.4)	240 (9.449)	410 (16.14)	397 (15.63)	220 (8.66)	360 (14.2)	56 (2.21)	252 (9.92)	29456	6056C3	1250C
1400C	10P&UP	2700 (106.3)	2850 (112.2)	3000 (118.1)	10 (0.39)	50 (1.97)	12-56 (12-2.20)	15°	2150 (84.6)	4410 (173.6)	3780 (148.8)	4190 (164.9)	260 (10.24)	410 (16.14)	397 (15.63)	240 (9.45)	360 (14.2)	56 (2.21)	272 (10.7)	29468	6056C3	1400C

1. USABLE SHAFT LENGTH:V
2. UPPER BRG:ANTI-FRICTION BRG OIL LUBRICATION
3. LOWER BRG:ANTI-FRICTION BRG GREASE LUBRICATION

OUTLINE DIMENSIONS SHEET
 DWG NO.
 3-PHASE INDUCTION MOTOR
 FRAME NO. (ERV)800C-1400C