

Model:JSMA-PUC01A7K

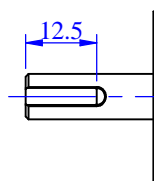
No.	Item	Symbol	Unit	Specification	No.	Item	Symbol	Unit	Specification
1	Drive	-	-	3φ 220 VAC	13	Rotor Inertia	J-M	kg-cm ²	0.041 ±10%
2	Cooling Method	-	-	Totally Enclosed	14	Rated Power Rate	Q-R	Kw/s	24.98
3	Exciting Method	-	-	Permanent Magnet	15	Resistance	Ra	Ω	25.4±10%/ 2φ
4	Resolution	-	-	17 bit INC	16	Inductance	L	mH	26.5±10%/ 2φ
5	Rated Output	P-R	KW	0.1	17	Mech. Time Constant	Tm	ms	1.11±10%
6	Rated Torque	T-R	N-m	0.32	18	Elect. Time Constant	Te	ms	1.04±10%
7	Max. Torque	T-max	N-m	0.95	19	Insulation Class	-	-	Class B
8	Rated Speed	N-R	rpm	3000	20	Operation Temp.	T	°C	0~40
9	Rated Current	I-R	A	0.9	21	Operation Humd.	RH	%	<80
10	Max. Current	I-max	A	2.7	22	Storage Temp.	T	°C	-20°~60°
11	Torque Constant	Kt	N-m/A	0.36±10%	23	Storage Humd.	RH	%	<80
12	Voltage Constant	Ke	V/krpm	23.7±10%/ 2φ	24	Weight	W	kgw	0.48

1	U	Red
2	V	White
3	W	Black
4	F/G	G/Y

Motor Wiring

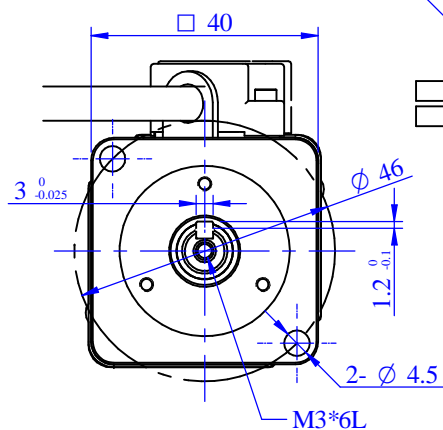
1	Vcc	White
2	GND	Black
3	-	-
4	-	-
5	SD	Blue
6	SD	Purple
7	-	-
8	-	-
9	FG	Shield

Encoder Connection



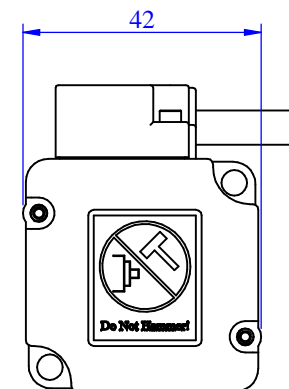
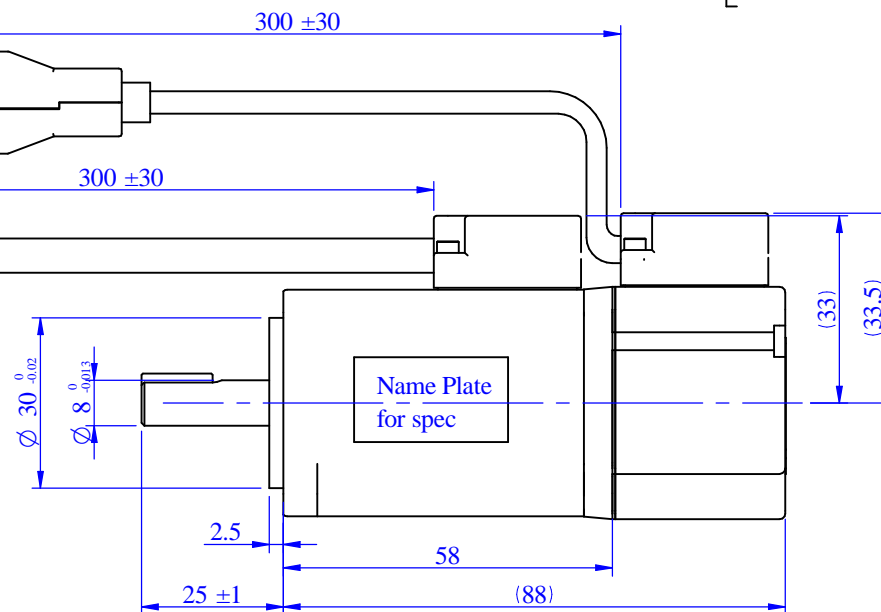
PIN:AMP 770835-1
HOUSING:AMP 172169-1



PIN:AMP 170360-1
HOUSING:AMP 172167-1



Note:

- 1.Motor to be IP67.(excluding the shaft opening & connectors)
- 2.The detail of Name plate for Spec. refers to the file. DC-JXE-002.



STANDARD TOLERANCE						APVD			SCALE		UNIT	m m	NAME	SERVO MOTOR OUTLINE DRAWING			
X	±0.5					CHKD			3RD .A.P		TITLE	JSMA-PUC01A7K					
.X	±0.2					CHKD											
.XX	±0.05																
ANGLE	±30'	01	1S17B09-02	Jeffchen	11-09-'17	DWN	Leon	11-08-'17	 TECO ELECTRO DEVICES CO., LTD.				Dept. Design	DWG.NO.	D01X04101C3N73DX1		
MATERIAL		REV	DESCRIPTION	SIGNATURE	DATE		SIGNATURE	DATE									